



MASTERWORKS FROM THE NEUE GALERIE NEW YORK

RONALD S.
LAUDER
**NEUE
GALERIE**
MUSEUM FOR GERMAN
AND AUSTRIAN ART
NEW YORK



Gustav Klimt (1862–1918), PARK AT KAMMER CASTLE, 1909
Oil on canvas, 110 x 110 cm (43 ¼ x 43 ¼ in.). Neue Galerie New York. This work is part of the collection of Estée Lauder and was made available through the generosity of Estée Lauder



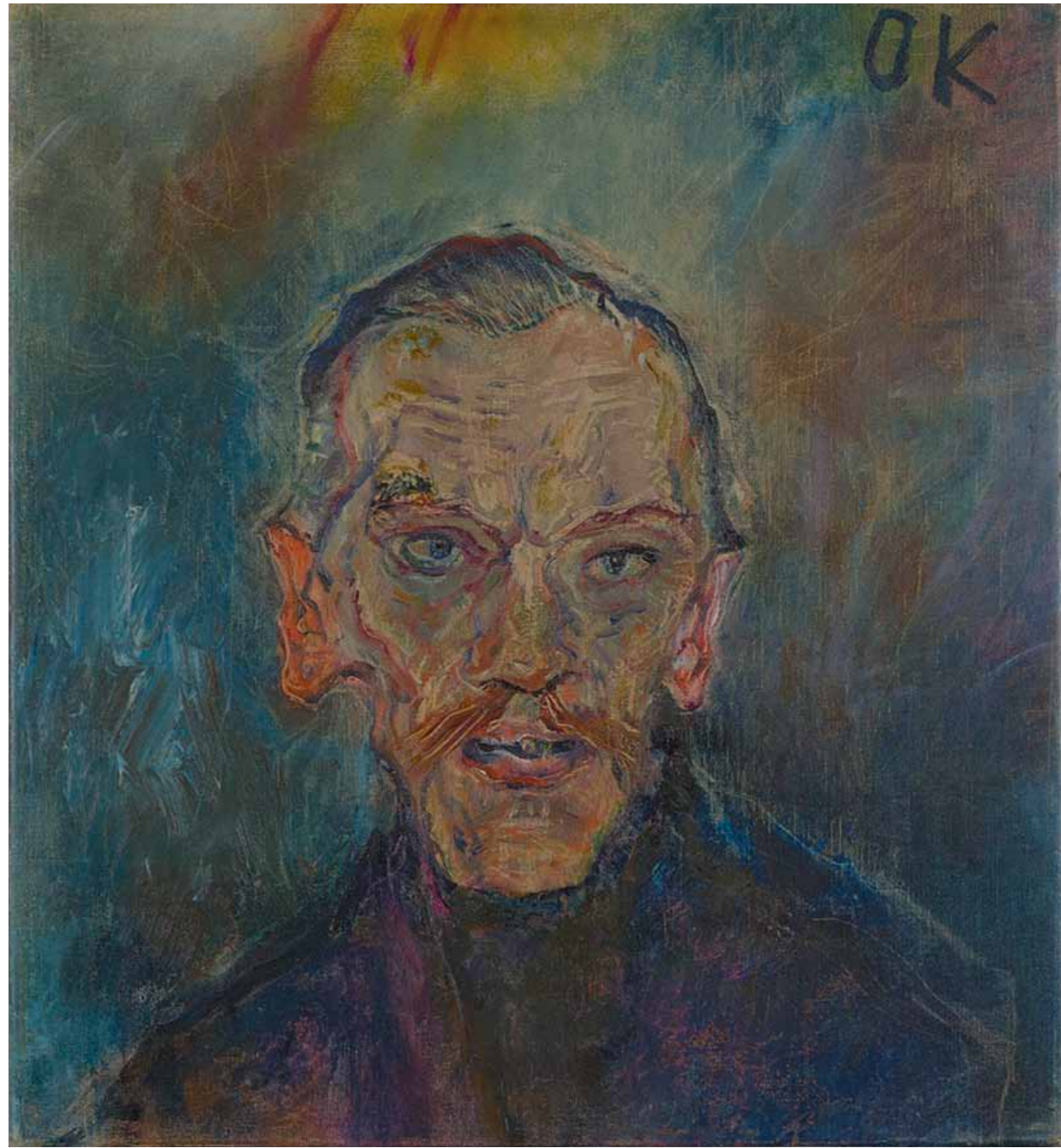
Gustav Klimt (1862–1918), FORESTER'S HOUSE IN WEISSENBACH I, 1914
Oil on canvas, 110 x 110 cm (43 ¼ x 43 ¼ in.). Neue Galerie New York. This work is part of the collection of Estée Lauder and was made available through the generosity of Estée Lauder



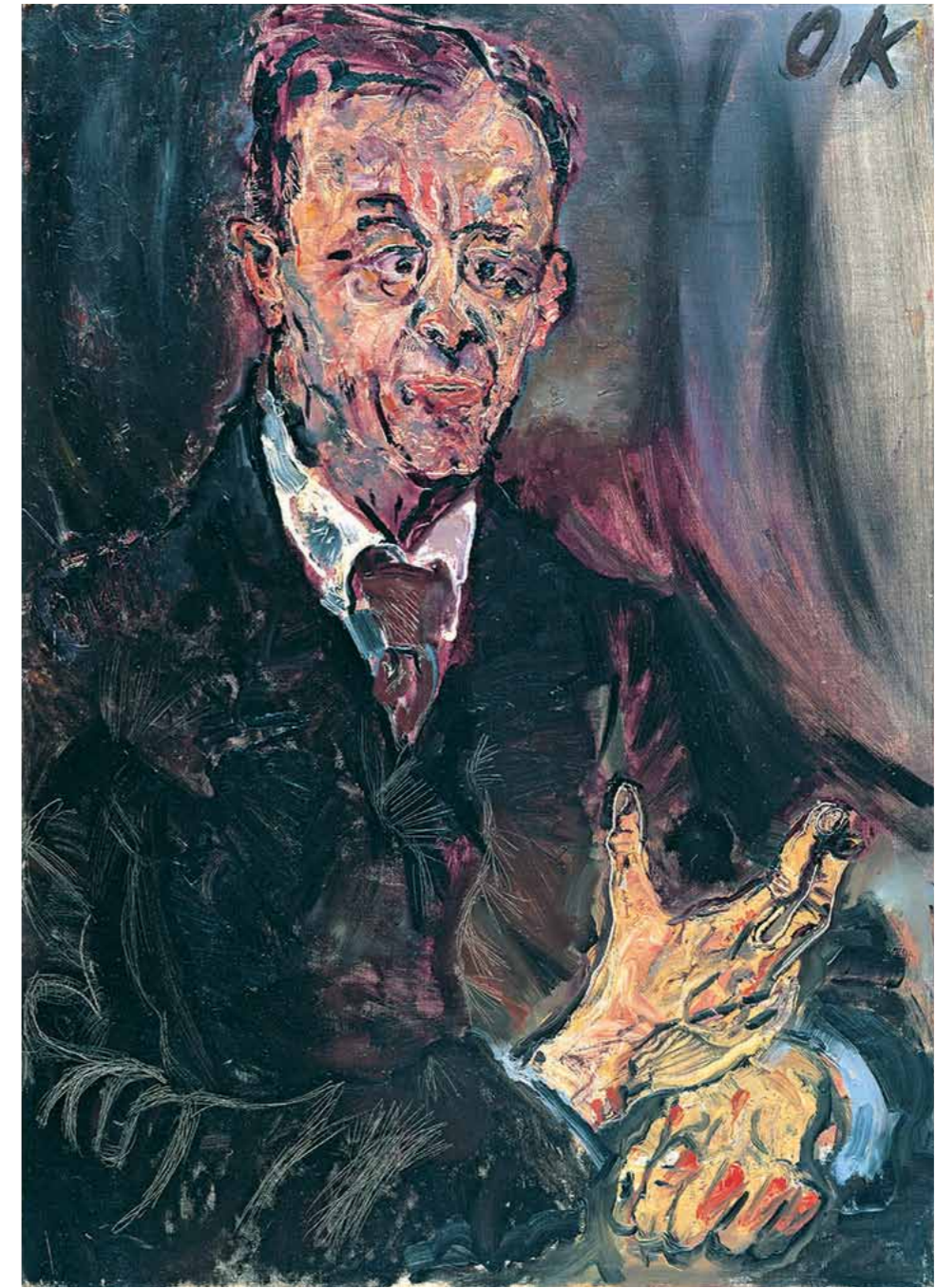
Egon Schiele (1890–1918), FRIENDSHIP, 1913
Watercolor, gouache, and pencil on paper, 48.2 x 32 cm (19 x 12 5/8 in.). Private Collection



Egon Schiele (1890–1918), WALLY IN RED BLOUSE WITH RAISED KNEES, 1913
Watercolor, gouache, and pencil on paper, 32.1 x 48.8 cm (12 5/8 x 19 1/4 in.). Private Collection



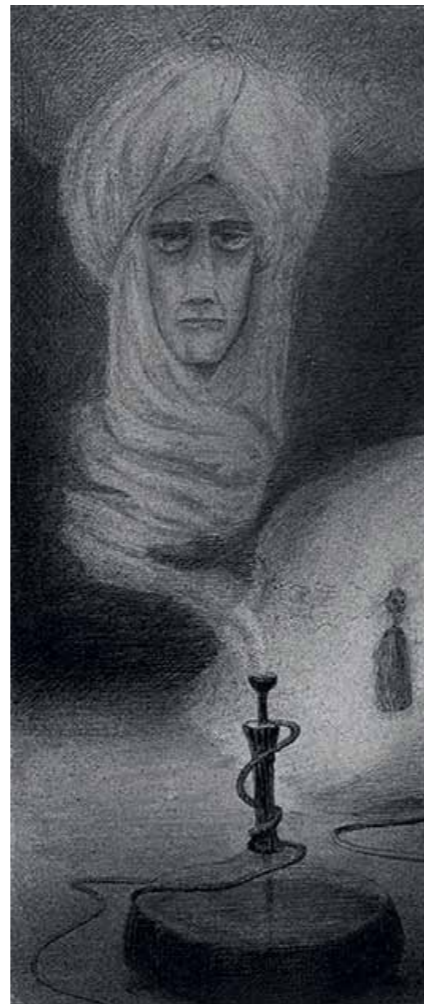
Oskar Kokoschka (1886–1980), LUDWIG RITTER VON JANIKOWSKI, 1909
Oil on canvas, 60.2 x 55.4 cm (23 3/4 x 21 3/4 in.). Private Collection



Oskar Kokoschka (1886–1980), RUDOLF BLÜMNER, 1910
Oil on canvas, 80 x 57.5 cm (31 1/2 x 22 3/4 in.). Private Collection



Alfred Kubin (1877–1959), MAN IN A STORM, ca. 1903
Pen and ink, wash, charcoal, and spray on paper, 16.5 x 24.15 cm (6 ½ x 9 ½ in.). Neue Galerie New York



Alfred Kubin (1877–1959), ALADDIN, ca. 1902
Brush, ink, and pencil on paper, 10 x 23 cm (3 ¾ x 9 in.).
Neue Galerie New York



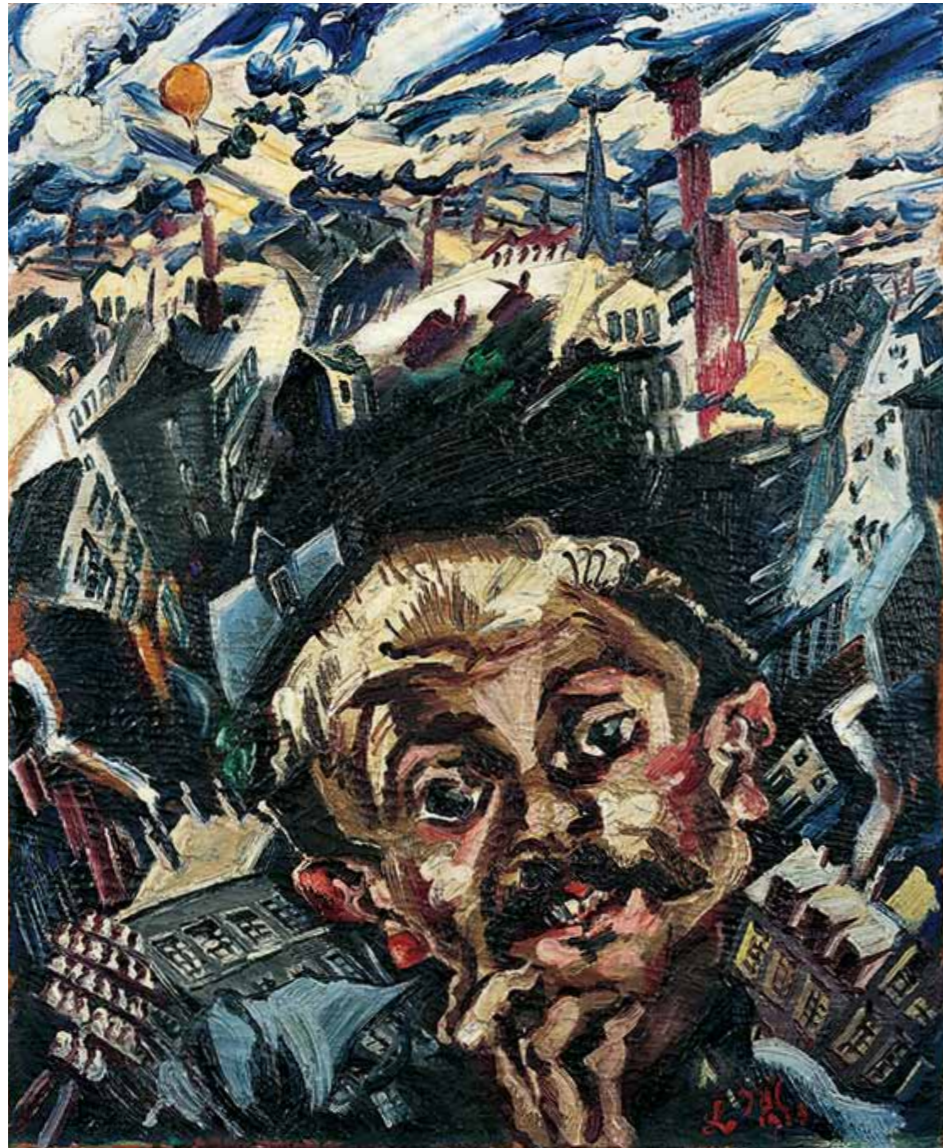
Alfred Kubin (1877–1959), THE GLUTTON, ca. 1903–04
Pen and ink, wash, and stipple on paper, 29.8 x 30.2 cm (11 ¾ x 11 ⅞ in.). Private Collection



Josef Hoffmann (1870–1956), BONBONNIÈRE ACQUIRED BY PAUL WITTGENSTEIN, 1905
Execution: Wiener Werkstätte, model no. S 332 (Alfred Mayer). Silver and onyx, Ht. 10.3 x Diam. 4.1 cm (4 3/8 x 3 1/2 in.). Private Collection



Josef Hoffmann (1870–1956), BONBONNIÈRE, 1906
Execution: Wiener Werkstätte, model no. S 485 (Josef Hozsfeld). Silver and lapis lazuli, 18.1 x 11.43 x 11.43 cm (7 1/8 x 4 1/2 x 4 1/2 in.). Private Collection



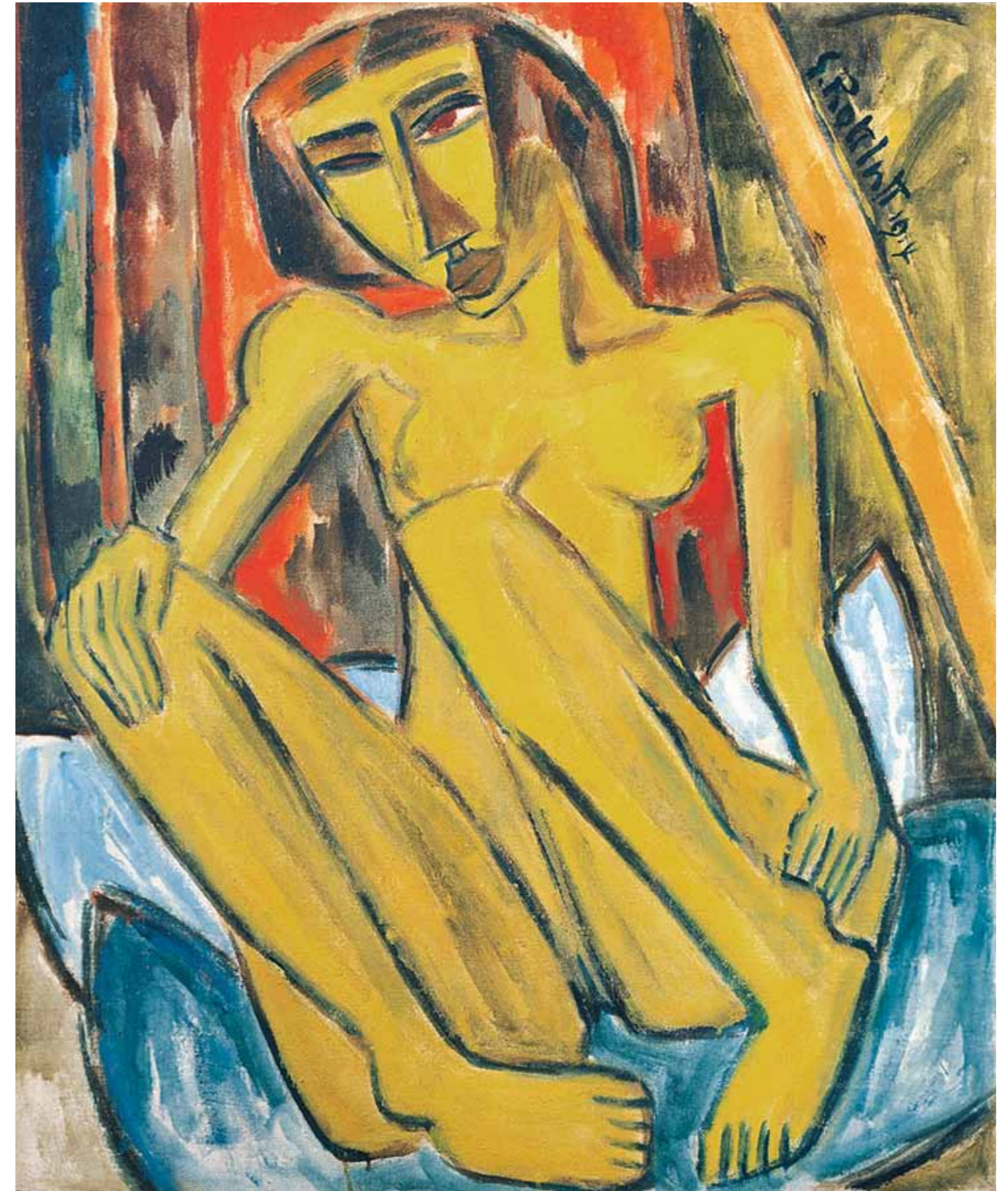
Ludwig Meidner (1884–1966) I AND THE CITY, 1913
Oil on canvas, 65.1 x 49.8 cm (25 5/8 x 19 5/8 in.). Private Collection



Lovis Corinth (1858–1925) FRUIT BOWLS, 1923
Oil on canvas, 70 x 90 cm (27 5/8 x 35 3/8 in.). Neue Galerie New York. This work is part of the collection of Estée Lauder and was made available through the generosity of Estée Lauder



Hermann Max Pechstein (1881–1955) YOUNG WOMAN WITH RED FAN, ca. 1910
Oil on canvas, 100 x 71 cm (39 3/8 x 27 7/16 in.). Neue Galerie New York. This work is part of the collection of Estée Lauder and was made available through the generosity of Estée Lauder



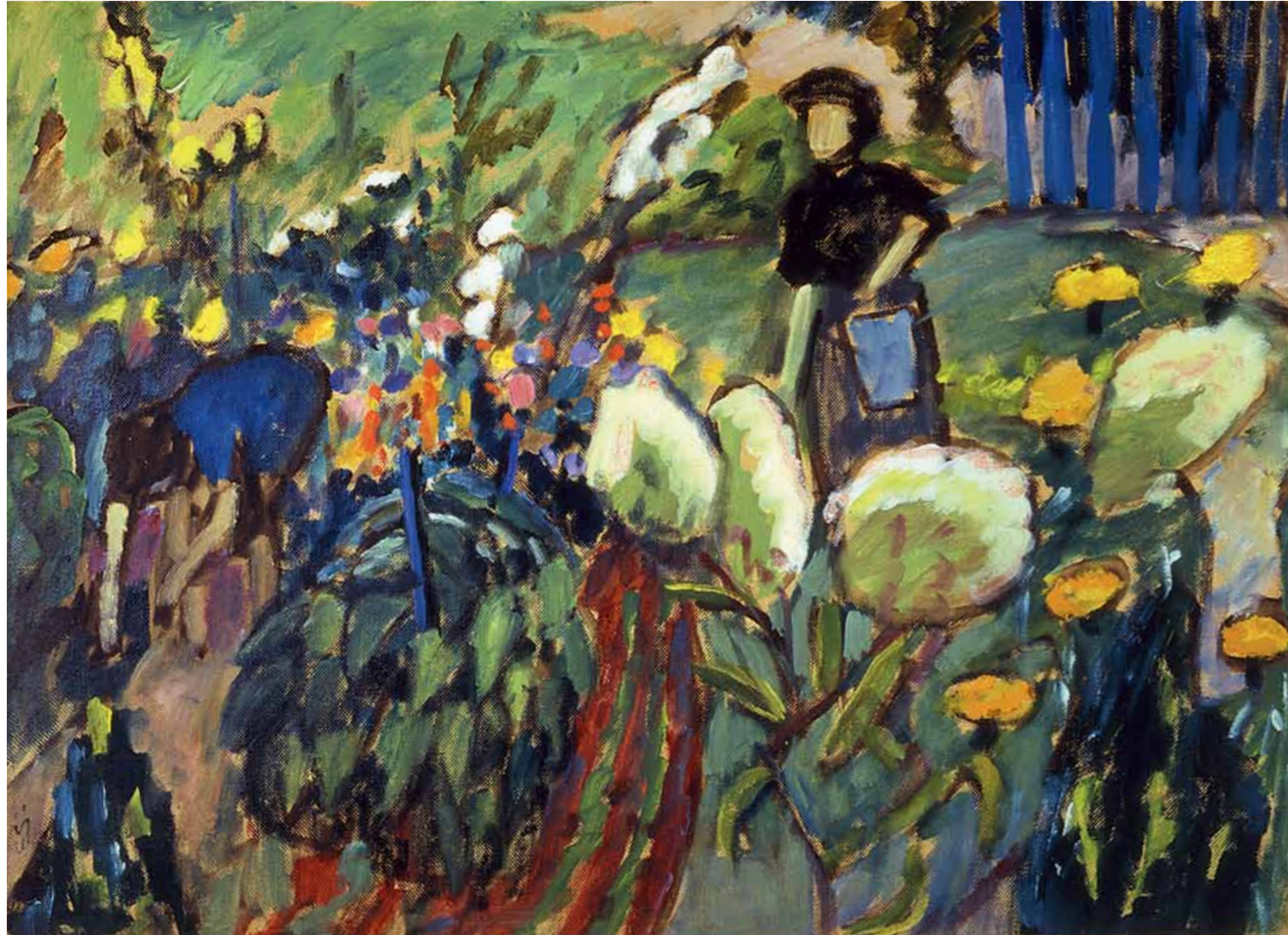
Karl Schmidt-Rottluff (1884–1976) NUDE, 1914
Oil on canvas, 90.5 x 76 cm (35 5/8 x 29 7/8 in.). Neue Galerie New York



Franz Marc (1880–1916) THE FIRST ANIMALS, 1913
Gouache and pencil on paper, 38.7 x 46.4 cm (15 ¼ x 18 ¼ in.). Private Collection



August Macke (1887–1914) DONKEY RIDER, 1914
Watercolor on paper, 24.5 x 30.5 cm (9 ½ x 12 in.). Private Collection



Gabriele Münter (1877–1962) WOMAN IN GARDEN, 1912
Oil on canvas, 48.2 x 66 cm (19 x 26 in.). Neue Galerie New York. This work is part of the collection of Estée Lauder and was made available through the generosity of Estée Lauder



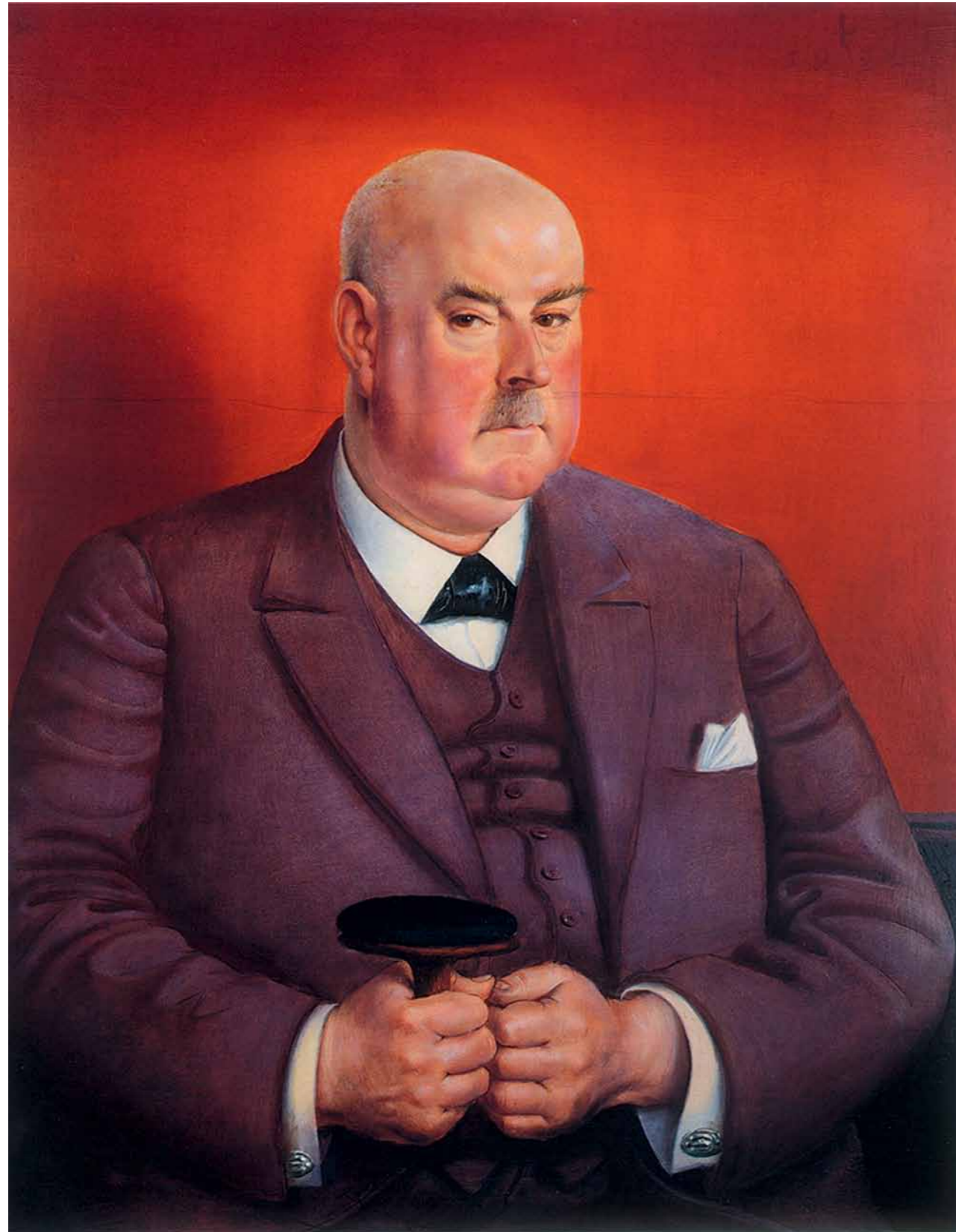
Gabriele Münter (1877–1962) KANDINSKY IN INTERIOR, ca. 1912
Oil on canvas on panel, 84.5 x 43.2 cm (33 1/4 x 17 in.). Neue Galerie New York. This work is part of the collection of Estée Lauder and was made available through the generosity of Estée Lauder



Max Beckmann (1884–1950) SELF-PORTRAIT IN FRONT OF RED CURTAIN, 1923
Oil on canvas, 122.9 x 59.2 cm (48 3/8 x 23 3/8 in.). Private Collection



Max Beckmann (1884–1950) GALLERIA UMBERTO, 1925
Oil on canvas, 113 x 50 cm (44 3/8 x 19 3/4 in.). Private Collection



Otto Dix (1891-1969) PORTRAIT OF JOHANN EDWIN WOLFENSBERGER, 1929
Oil on panel, 93.2 x 72.3 cm (35 7/8 x 24 1/4 in.). Neue Galerie New York



**Otto Dix (1891-1969) SEATED FEMALE NUDE WITH RED HAIR AND STOCKINGS
IN FRONT OF PINK CLOTH, 1930**
Mixed media on panel, 134 x 65 cm (52 3/4 x 25 5/8 in.). Private Collection



Lyonel Feininger (1871–1956) GELMERODA II, 1913
Oil on canvas, 100 x 80 cm (39 3/8 x 31 1/2 in.). Neue Galerie New York. This work is part of the collection of Estée Lauder and was made available through the generosity of Estée Lauder



Lyonel Feininger (1871–1956) THE BLUE CLOUD, 1925
Oil on canvas, 48.3 x 67.3 cm (19 x 26 1/2 in.). Neue Galerie New York. This work is part of the collection of Estée Lauder and was made available through the generosity of Estée Lauder